

Fall
2019

Litchfield Legends

A publication of the Litchfield Park Historical Society and Museum

Stagecoaches to **Spacecraft**

by Sally Kiko

Three Rivers Historical Society is excited to share the history of the Avondale-Goodyear area. We have a collection of wonderful photos and stories of this area that did, indeed, begin with a stagecoach stop and progressed to Goodyear Aerospace Corporation's contributions to the space program.

EXHIBIT GRAND OPENING

Litchfield Park Museum

Stagecoaches to Spacecraft

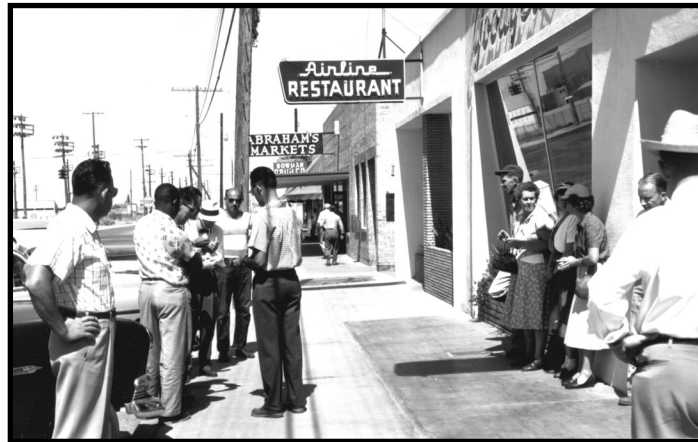
Sunday, October 20th

1:00 pm to 4:00 pm

**This exhibit is a collaboration
between the Three Rivers and
Litchfield Park Historical Societies**

It all began on the west bank of the Agua Fria River where Billy Moore built a stagecoach stop complete with horse corrals and a cold-water well. Eventually a general store/post office was added. With the help of the Homestead Act and the Desert Land Act, farmers seeking fertile soil and a chance to own land soon arrived and the small settlement called Coldwater formed. As the town expanded, retail

arrived to serve the needs of the growing community.



National events affected the growth and development of the area. The Dust Bowl, the Great Depression, but most of all World War II impacted our history. The town of Coldwater was on one of the routes to

California where many fleeing the Dust Bowl thought they could find work and a new start. However, car trouble or finding a good job right here convinced them to settle here. Some families came for the warm, dry weather advised for tuberculosis.

With war on the horizon, Goodyear Tire and Rubber Co. came to the area to manage an aircraft factory built by the Department of Defense. Experienced workers and supervisors moved from Akron, Ohio, to the not yet formed town of Goodyear and began building aircraft parts for the military. The need for production workers was great; gas rationing made living nearby particularly attractive. Homes, apartments and trailer parks were built to accommodate the workers.

In This Issue:

- Stagecoaches to Spacecraft: The Story of Avondale and Goodyear
- Upcoming Events and Future Fundraisers
- President's Letter
- Spanish Flu of 1918 Exhibit
- Avondale and Goodyear Photos
- St. Thomas Aquinas 100th Anniversary
- Generosity of Bill Kaufman
- Sponsors
- Membership Form

Continued on Page 4

Board of Directors

Executive Committee

Nancy Schafer, President
Lisa Hegarty, Vice President
Meredeth Stucky, Secretary
Karen Krause, Treasurer
Lisa Brainard-Watson, Past President

Board Member Emeritus

Robert McMillan, DDS

Board Members

Larry Baker
Judy Cook
Paul Crawley
John Donahue
Judy Fulton
Sara Homan
Linda Lamm
Jeff Raible
Sonia Rado
William Robey, MD
Ruben Rosales
Libby Hilton Rouse

General Counsel

Paul J. Faith, Esq.
Faith, Ledyard & Faith P.L.C.

Research Consultant

Dr. Gloria Cuadraz, ASU Associate
Professor, The School of Humanities,
Art and Cultural Studies

Special Thanks

The City of Litchfield Park
Tim Blake, LandCare LLC
Palm Gate RV & Self Storage

UPCOMING EVENTS and FUNDRAISERS SUPPORT OUR MUSEUM and SAVE THESE DATES

Father Kino: Journey to Discovery

Tuesday, October 15, 10:00 a.m. & Wednesday, October 16, 6:30 p.m. The Church at Litchfield Park, Souers Hall, 300 N Old Litchfield Rd, Litchfield Park.

Learn about this caring, charismatic, and multi-talented missionary who bridged the gap between European and Native American cultures. Traveling extensively in the Pimería Alta, including trips to the Colorado and the Gila Rivers, he established 24 missions and laid the foundation for the beautiful San Xavier del Bac near Tucson. Presented by Dr. Barbara Jaquay. This is a Free Event.

Stagecoaches to Spacecraft

Sunday, October 20, 1:00 p.m. to 4:00 p.m.

Litchfield Park Museum, 13912 W Camelback Rd.

Exhibit Opening for our newest exhibit telling the story of Avondale and Goodyear. This is a Free Event.

St Thomas Aquinas Mission Cornerstone Centennial

Sunday, November 3, 12:00 p.m. – 4:00 p.m.

St Thomas Mission Church, southwest corner of Neolin Ave & Wigwam Blvd, Litchfield Park.

November 3rd marks 100 years to the day the cornerstone was dedicated at the St Thomas Aquinas Mission. This event will have historical and cultural exhibits and activities including Dia de los Muertos displays, dance performances by Ballet Folklórico Esperanza, stories, and crafts. This is a Free Event.

TOP GOLF: Golf Event Fundraiser

Sunday, January 26, 2020. Top Golf, Glendale. 1:00 p.m. to 5:00 p.m.

Whether you're a novice or a pro, join us for a fun golf tournament or if you wish you can just sit back, relax and enjoy watching the tournament. We will have delicious hors d'oeuvres, silent auction, and prizes for the winners! Tickets go on sale in December.

**\$95 for golfers and \$60 for non-golfers.

"FRIENDS OF THE MUSEUM" GATHERING

Friday, March 13, 2020, 5:00 p.m. to 9:00 p.m. Location TBA

Don't miss out this year, only 100 tickets are available for this event. We will have hors d'oeuvres, beer and wine, entertainment and your ticket will include the Home and Garden Tour on Saturday. **Cost will be \$75 per person. Tickets go on sale in December.

SECOND ANNUAL HOME AND GARDEN TOUR

Saturday, March 14, 2020, 10:00 a.m. to 4:00 p.m.

This year's tour will feature a wide variety of architectural styles in homes that are scattered throughout Litchfield Park.

**Cost will be \$20 per person. Tickets go on sale in December.

****Tickets for all fundraisers can be purchased at www.LPHSMuseum.org with PayPal or come to the Museum Wednesday thru Friday from 10AM to 4PM.**

Letter from the President

This was a great summer for our organization. Each year our attendance has grown. This year we had over 400 people attending our museum and lectures from June through August. A special thank you to docent **Linda Lamm** for her fabulous museum tours given Wednesdays throughout the summer. Also, our **Summer Speaker's Program** was held each month at The Church of Litchfield Park in Souers Hall. Lisa Hegarty, board Vice President, partnered the LPHS with The Church of Litchfield Park to provide a monthly speaker. Each presentation was an hour long and on a variety of topics. The audience grew as the word spread and at last count, we had close to 100 attendees. The summer series has been so successful that Pastor Lynne Kammeraad has asked the LPHS to continue the program into the fall. Check our upcoming events section for the date and time of the October presentation on Father Kino.

We have a new exhibit opening Sunday, October 20th called "Stagecoaches to Spacecraft". This is our first collaboration with **Three Rivers Historical Society**. We are pleased to have Sally Kiko, historian and Goodyear's Citizen of the Year, as curator. If you miss the special opening, the exhibit will run for a full year, so you will have plenty of time to see it. Check out Sally's article in this publication.

On November 3rd the LPHS will be celebrating the dedication of the cornerstone laid 100 years ago for **St. Thomas Aquinas Mission**. We will have historical and cultural exhibits, crafts for the children, and the Ballet Folklorico Esperanza dancers will be performing. This is a celebration for everyone to enjoy. We hope you will join us to capture a very special piece of the history and

heritage of Litchfield Park.

The **P.W. Litchfield Heritage Center** project is progressing into the next phase. We are currently working with our architects, Orcutt-Winslow, to create the interior spaces for exhibits, archives and a research library. Come by the museum to review the architectural renderings of the project and visualize how fabulous the P. W. Litchfield Heritage Center will be when completed. Judy Cook is heading up our Capital Campaign and doing a fabulous job. We are almost halfway there! Please consider a special donation to the project. There are a few naming rights left. This is a wonderful opportunity to leave a legacy in your family's name for generations to come. We are also working on an extension of our web site that will be devoted exclusively to the Heritage Center.

Mark your calendar! In January, for those of you that love sports either as a competitor or observer, we will be sponsoring a great event at **Top Golf!** The month of March will bring the "**Friends of The Museum**" **Gathering** followed by the **2nd Annual Home and Garden Tour**. You will not want to miss any of these exciting programs, events and celebrations planned. We will have something for everyone.

We hope to see you soon!



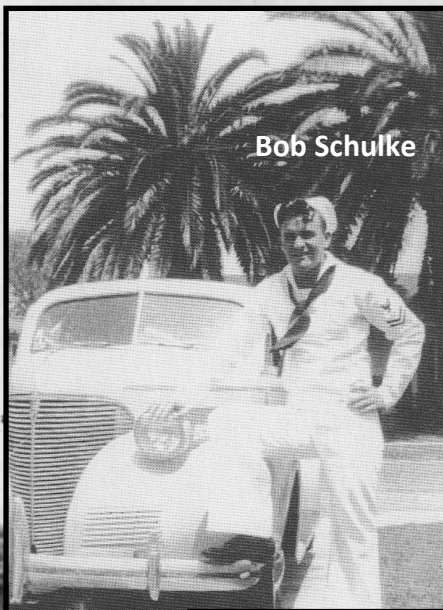
Nancy Schafer, LPHS Board President.



The Spanish Flu of 1918: A Pandemic's Local Legacy

Exhibit Opening Sunday, October 20, 1:00-4:00 pm

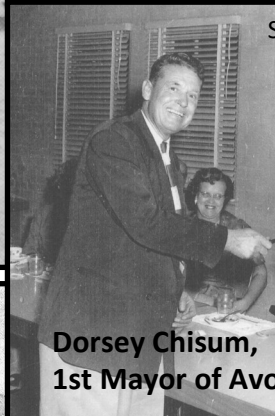
The years 1918-1920 brought startling devastation to nearly every corner of the world. In raw numbers, the influenza pandemic of 1918 killed more people than any other disease outbreak in human history by the time it ran its course. Half of those who died were young, healthy adults, and its spread was inextricably linked to the circumstances of WWI. The ravages of the disease inspired fear, stretched resources to the limit, and often overwhelmed existing health services. It left lasting changes on the communities it touched, including Litchfield Park. Here, it impacted public infrastructure and necessitated the creation of an emergency hospital and a cemetery. This exhibit examines the broad impact of the Influenza Pandemic of 1918 and its legacy in our community.



Bob Schulke



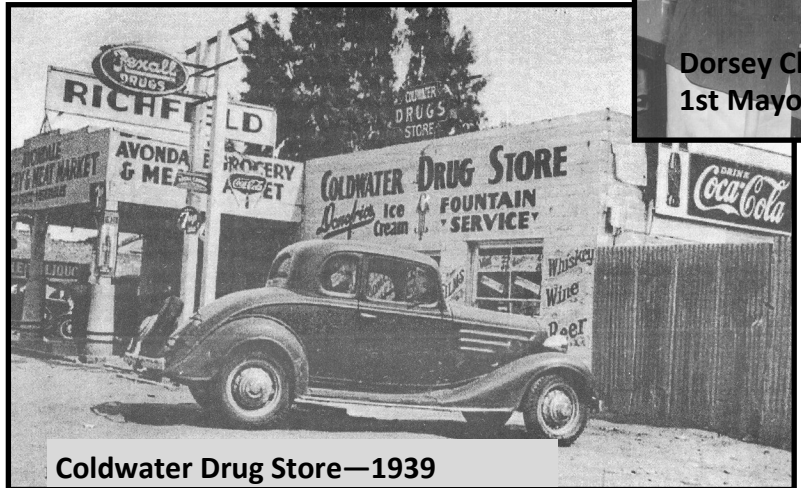
Goodyear's first fire truck



Dorsey Chisum,
1st Mayor of Avondale

Stagecoaches to Spacecraft:

The new residents near the Goodyear plant began working to improve the community they were forming. They paved their streets, arranged for milk delivery and better postal service. They eventually agreed to form a new town and named it Goodyear. In 1946, both Avondale, formerly Coldwater, and Goodyear incorporated. Town governments were formed; ordinary people became leaders of their respective towns. Each town had citizens who influenced their culture and growth.



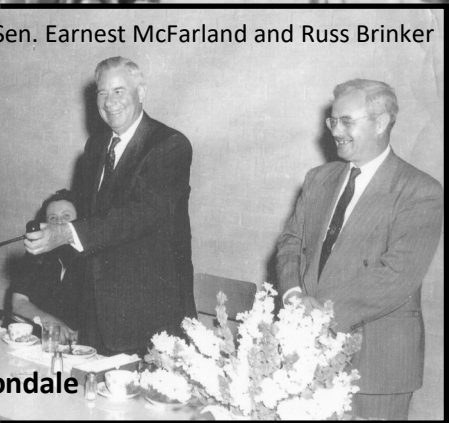
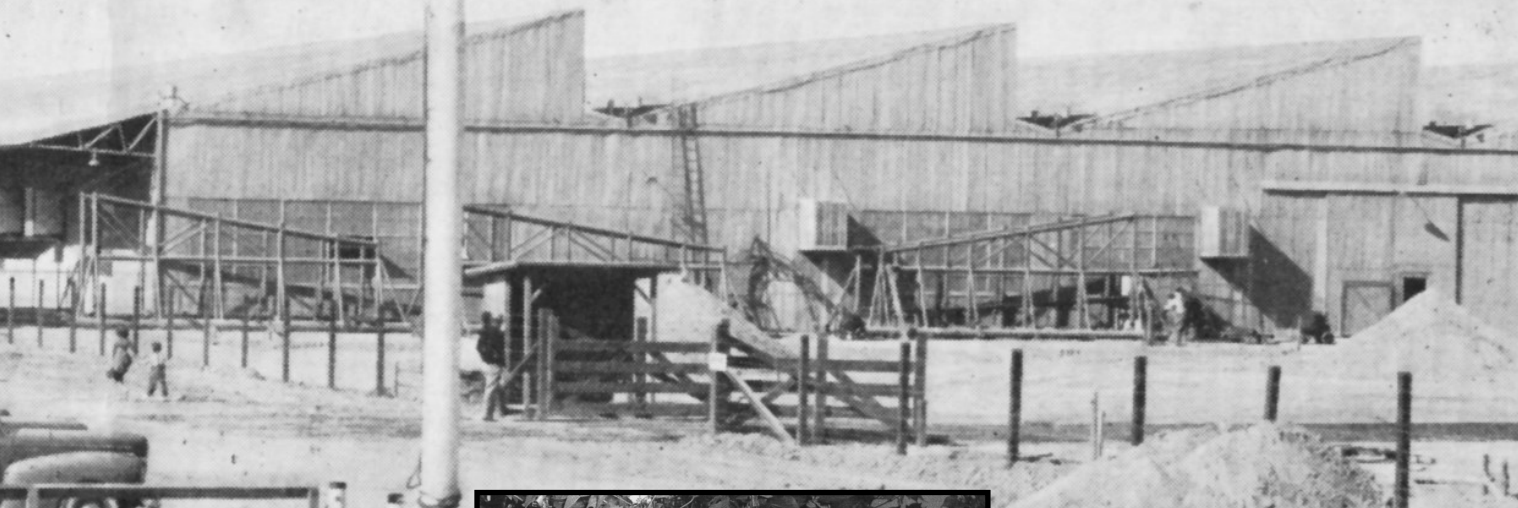
Coldwater Drug Store—1939

The early families will inspire you with the hardships they overcame and the hard work necessary to either establish a business or make a farm successful. Many, while working long hours, took time to serve on school boards or in civic organizations to better their communities. We hope you will enjoy this look at our past and come away knowing more about our shared history.



The Story of Avondale and Goodyear

Goodyear Aircraft's 1st Building



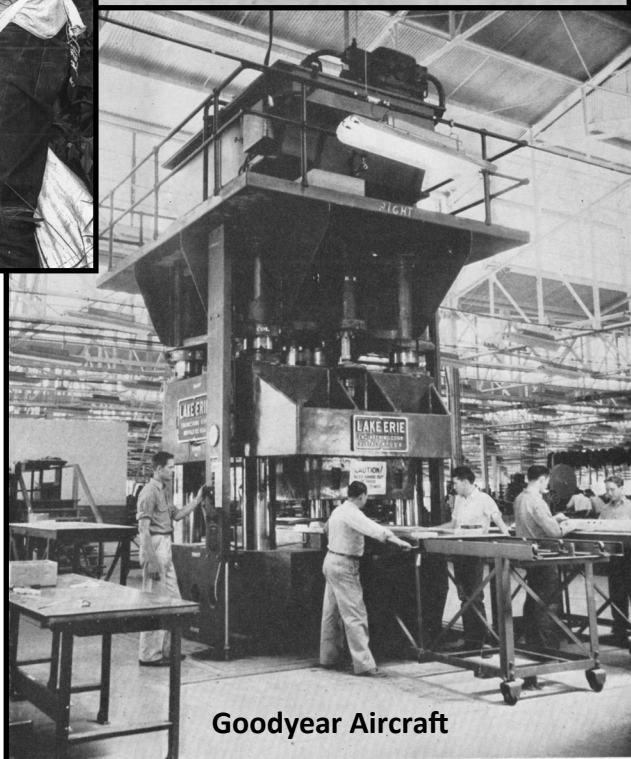
Sen. Earnest McFarland and Russ Brinker

Avondale



Cotton Picker

Exhibit underwritten by a grant from Wilbur E. Kaufman.



Goodyear Aircraft



Centennial Celebration in Litchfield Park St. Thomas Aquinas Mission Church

By Lisa Hegarty

Located across from the Wigwam Resort entrance, the original St. Thomas Aquinas Mission Church is still a building to be admired. Its clean, white lines and sculpted doorway has charmed people since it was first built and is a popular backdrop for local photographers today.

A partnership between Southwest Cotton Company, local residents, and the Tucson Diocese of the Catholic Church brought the building into existence. With Goodyear Tire and Rubber's support, Paul Litchfield worked with Frank and Sara Serrano, who ran the Litchfield Park general store and post office, to select a site for the church. Local rancher Thomas Doyle sold the land to Southwest Cotton Company and helped supply labor for construction.



St. Thomas Aquinas bell

Paul Litchfield once said, "It costs little more to make anything beautiful rather than merely functional," which might explain his decision to seek out a prominent Pasadena architect and fellow M.I.T. alumnus known for his masterful use of the Mission Revival style in southern California. Reginald Johnson had a distinguished career designing a mix of private homes, public buildings, and churches. Many of his buildings still stand in the Los Angeles area and have been recognized for their architectural and historical significance.

While the cornerstone for St. Thomas Aquinas was dedicated November 3, 1919, the building wasn't completed until 1923. Tough economic times in 1920, which nearly bankrupted Goodyear Tire and Rubber Company, were likely responsible for construction delays. Having been built to fill a need for the Mexican Catholic workers who were central to Litchfield Park's development, the building itself was a community cornerstone for over 50 years. Interestingly, the design



Early photo of St Thomas Aquinas Mission Church.
Note the bell visible in the bell tower.

bears a striking resemblance to another place of worship designed by Johnson: Saint Saviour's Chapel at Harvard-Westlake School in Los Angeles, which has been designated a Los Angeles Historic-Cultural Landmark. Though St. Thomas Aquinas Mission Church was perhaps one of Johnson's more modest projects, it's no wonder the church is a landmark in Litchfield Park.

In honor of the mission church and the central role it has played in our community, the Litchfield Park Historical Society is hosting **Centennial Celebration in Litchfield Park** on Sunday, November 3rd from 12:00 p.m. - 4:00 p.m. The event will be held at the St. Thomas Aquinas Mission Church on the southwest corner of Neolin Ave. and Wigwam Blvd. Festivities will include dance performances by the Ballet Folklorico Esperanza, Dia de los Muertos displays, history displays, face painting, and crafts. Those who attended the church are encouraged to bring their favorite memories and stories to share.



St. Saviour's Chapel in Los Angeles,
designed by Reginald Johnson

The Continuing Generosity of Bill Kaufman

Once again Bill Kaufman has proved himself to be a very generous donor to the LPHS. Over the years, Bill has donated many artifacts to our museum to enrich our collections. This past summer he donated two very interesting additions to our collections – a small metate and a grub box – both items found on his father’s farm in Liberty. We believe that the metate was used by Native Americans for the grinding of herbs for either medicinal purposes or religious ceremonies. You can see it on display at our museum now. The grub box was used to carry food along the Arizona trails during the late 19th century and will be on exhibit along with its fascinating contents when we move to our new P.W. Litchfield Heritage Center.



Bill has also underwritten our fall exhibit for the fourth year in a row! This year’s exhibit will detail the history of Avondale and Goodyear. It has been curated by Three Rivers Historical Society Board member Sally Kiko. Visitors will enjoy viewing photos portraying the story of the growth of these two cities as they developed side by side in the Arizona desert.

We owe much to Bill’s devotion to our museum. Over the years, he has proved himself to be a kind and generous donor to our efforts and one of our guardian angels. Over the past six months, he has been recovering from the aftermath of two heart attacks. That has prevented his frequent visits to our museum. We wish him renewed health and hope to see him at the museum soon. Bill – thank you from the bottom of our hearts.

The Board of Directors of the LPHS and MUSEUM

CARS

Did you know we are also in the car business? The Museum accepts unwanted vehicles - of all shapes, sizes, and working order. For your donation, we receive the trade-in value and you get a tax credit. It’s as simple as dialing 844-569-4483 or through the computer at www.LPHSMuseum.org. **Thank you Jacob for donating your vehicle.**

Sponsors

\$500 Level



LA LOMA VILLAGE

14154 Denny Boulevard
Litchfield Park, AZ 85340



S&S Tire & Auto Service Center
800 N. Dysart, Goodyear, AZ 85338



WIGWAM
ARIZONA

300 E. Wigwam Blvd., Litchfield Park, AZ
www.wigwamresort.com

\$250 Level

Mary Cavanaugh-Marsh,
Financial Adviser, EDWARD JONES

Estrella Rotary Club

Mickey Ollson, Wildlife World Zoo
and Aquarium

\$100 Level

Paul J. Faith, Esq., Faith, Ledyard & Faith, P.L.C.

Victor Fierros, Jewelry by Victor

Peter Mahoney, Park Café, Old Pueblo Café,
and Papa Paul's

John Manobianco, State Farm Insurance

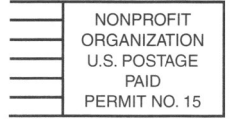
Margie Martinez, La Loma Mexican Grille



PO Box 1936
Litchfield Park, Arizona 85340

Location Address: 13912 W Camelback Rd.

Email: office@LPHSMuseum.org
www.LPHSMuseum.org



Do you have empty aluminum cans?

The LPHS will recycle them for you. Leave them at the garage door of 610 N. Old Litchfield Road, Litchfield Park. The money will help the LPHS pay its utility bills.

***Aluminum only. No tin cans please.**



Join Us. It is through your dues and donations that we are able to continue our efforts to preserve the history of Litchfield Park. *Become a member today.*

LPHS 2020 Membership/Special Donation Form

January 1 – December 31, 2020 membership year

Name _____ Spouse's Name _____

Mailing Address _____

City _____ State _____ Zip _____

Phone _____ Email _____

Annual Membership Dues Single Adult \$25 Family \$35 Business/Professional \$60
 Contributor \$125 Lifetime \$600

I would like to make an additional Special Donation of: \$25 \$50 \$100 Other _____

Thank you! Please make your check payable to: **Litchfield Park Historical Society**
PO Box 1936, Litchfield Park, AZ 85340

Would you be interested in volunteering for our organization? Yes

The Litchfield Park Historical Society is an official IRS 501 (c)(3) non-profit corporation, and membership dues and other donations are tax deductible for persons who itemize.