

Spring
2019

Litchfield Legends

A publication of the Litchfield Park Historical Society and Museum

The P.W. Litchfield Heritage Center *History, Arts, and Culture of the Southwest Valley*

The Litchfield Park Historical Society (LPHS) is proud to announce that we have exciting plans for the future site of our museum. We will be moving to the top of the hill behind our current museum and into the historic Litchfield/Denny house. The house, located in the center of an historic 21-acre property, will be repurposed into a museum, archive, research library, and site for community gatherings. Our new facility will be called **The P.W. Litchfield Heritage Center**.

Mr. and Mrs. John Blackford gave impetus to this exciting project. Mrs. Blackford is **Pamela Denny Blackford** – the daughter of Edith and Wally Denny, and granddaughter of Paul and Florence Litchfield. She had long dreamed of seeing the historic house and property brought back to life – a place that held many happy memories for her from her childhood and adult years. She was also committed to acknowledging the remarkable legacy of her grandfather – **Paul Weeks Litchfield**. It is said that Paul Litchfield was to the rubber industry what Thomas Edison was to electricity. Added to that extraordinary heritage was **the impact that Paul Litchfield and the Goodyear Tire & Rubber Co. had on the Southwest Valley**. Without Litchfield's love of Arizona, the Southwest Valley would not have had the beginnings of the cities of **Litchfield Park** and **Goodyear**, Goodyear Farms, The Wigwam, St. Thomas Aquinas Church, The Church at Litchfield Park, the Goodyear-Phoenix Airport, and so much more. Researchers at the LPHS believe that the story of our area during the first half of the 20th century is one of the top ten stories in the state of Arizona for that time period – one worthy of preserving and professionally showcasing for current and future generations. Pamela and John Blackford, because they were aware of the significance



Pamela Denny Blackford and John Blackford

In This Issue:

- P.W. Litchfield Heritage Center
- Upcoming Events
- P.W. Litchfield Heritage Center Logo
- President's Letter
- Home & Garden Tour
- Water Fest Event
- Sponsors
- Membership Form

Board of Directors

Executive Committee

Nancy Schafer, President
Lisa Hegarty, Vice President
Meredeth Stucky, Secretary
Jeff Raible, Treasurer
Lisa Brainard-Watson, Past President

Board Member Emeritus

Robert McMillan, DDS

Board Members

Larry Baker
Judy Cook
Paul Crawley
John Donahue
Judy Fulton
Sara Homan
Karen Krause
Linda Lamm
Sonia Rado
William Robey, MD
Ruben Rosales
Libby Hilton Rouse

General Counsel

Paul J. Faith, Esq.
Faith, Ledyard & Faith P.L.C.

Research Consultant

Dr. Gloria Cuadraz, ASU Associate
Professor, The School of Humanities,
Art and Cultural Studies

Special Thanks

The City of Litchfield Park
Tim Blake, LandCare LLC
Palm Gate RV & Self Storage

Upcoming Events

Water Fest

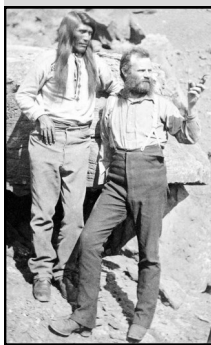
Saturday, April 13, 2019, 10:00 a.m. – 4:00 p.m. Free Event
Litchfield Park Historical Society Museum, 13912 W Camelback Rd,
Litchfield Park, AZ See Page 5 for all the details.

Speakers Series: Mickey Ollson and the Wildlife World Zoo & Aquarium

Sunday, May 5, 2019, 3:00 p.m.

La Loma Village Atrium, 14154 Denny Blvd,
Litchfield Park, AZ Free Event

Director and founder of the Wildlife World Zoo & Aquarium will speak about how the zoo got its start and blossomed into the largest collection of exotic animals in Arizona. In partnership with Sun Health.



Speakers Series: John Wesley Powell: Into the Great Unknown

Tuesday, June 18, 2019, 10:00 a.m. Free Event

The Church at Litchfield Park, Souers Hall, 300 N
Old Litchfield Rd, Litchfield Park, AZ

Speakers Chris Glen and Sandy Sunseri with the Arizona Humanities Council will tell the story of John Wesley Powell, a one-armed Civil War veteran who set out with nine men to navigate and document the Colorado River's course through the Grand Canyon.

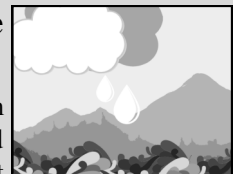
Water: Where Does it Come From? Where Does it Flow?

LPHS will present a kid-friendly program demonstrating with 3D models how surface water and groundwater play a part in the water cycle. Free Event for ages 6 and up. This program will be presented at two dates and two locations.

Tuesday, June 18, 2019, 2:00 p.m. Litchfield Park Branch Library,
Community Room, 101 W Wigwam Blvd., Litchfield Park, AZ

Tuesday, June 25, 2019, 11:00 a.m. White Tank Branch Library,
20304 W White Tank Mountain Rd., Waddell, AZ

For more events in July see our web site: www.LPHSMuseum.org



P.W. Litchfield Heritage Center Logo

The design team at Orcutt/Winslow has developed a logo for the P.W. Litchfield Heritage Center. It will be used as soon as the Heritage Center is opened. The design is centered around the tower that will be on the northeast corner of the building. This tower will enclose an elevator which will allow ADA accessibility to all three floors of the new facility. Also included is an exterior stairway that currently exists and has beautiful tile on the risers of the stairs. Behind the stairway, you will see a palm tree which grows on the west side of the building, a beautiful blue Arizona sky, and white clouds. Below this circular image you will find the words: **P.W. Litchfield Heritage Center.**



P.W. LITCHFIELD
HERITAGE CENTER



Letter from the President

Hello everyone, spring has finally arrived!

As your new President of the Board of Directors, I am very eager to share our exciting news with you and tell you about upcoming events and programs you won't want to miss. We also have a photo page from our most recent Home and Garden Tour.

First a couple of words about myself. I have been a volunteer at the LPHS since 2012 and during my first year, had the great pleasure of helping with the opening of our museum. Having retired from the business world in California, it has been an exciting new venture for me to work with so many talented and wonderful people. In January your president of nine years, Lisa Brainard-Watson, stepped in to a new chapter of her life and is now a member of the Litchfield Park City Council. Everyone at the LPHS, extends a huge thank you to her for her incredible commitment to our organization. As Past President she will continue to serve the LPHS on committees and provide sage advice as we move forward. Our Treasurer Jeff Raible will be leaving us later this year. He and his wife Karen will be moving to Cottonwood where they will pursue their dream of owning a Bed & Breakfast. Jeff has been an incredible asset to our organization. Next time you see Lisa or Jeff be sure and say, "thank you" for their dedication to the LPHS.

Our exciting news is the **P. W. Litchfield Heritage Center**, our new home. Be sure to read the very informative article for details, including how you can be a part of our historic new home. It is an exciting project that will bring a fabulous museum with exciting

programming and interesting learning opportunities for everyone in the Southwest Valley.

Our most recent event on March 1st and 2nd, was the Home & Garden Tour. I am pleased to announce it was a great success. Event co-chairs Meredith Stucky and Judy Fulton put their heart and soul in to this two-day affair. Please read the article and enjoy the photos in this newsletter. It took months of hard work and many volunteers to put on such a great event that showcased the homes and history in Litchfield Park. If you missed the event this year, look for it again next Spring. We plan to have this fundraiser as an annual event.

Our Programs Chair, Lisa Hegarty has also been very busy. There will be a Water Fest on Saturday, April 13th at the museum. This is a great time to bring your children and grandchildren. The event is free and offers interactive exhibits and demonstrations. The displays will highlight the history and science of water in the desert. Lisa has provided an overview of the day's events in this publication. Be sure and mark your calendar with the dates scheduled for our guest speakers throughout the spring and summer months. In May, we are partnering with La Loma to have Mickey Ollson, the owner of the Wildlife World Zoo & Aquarium as a guest speaker. He will talk about the inner workings of his Southwest Valley attraction.

To learn more about the P.W. Litchfield Heritage Center stop by the museum. We will have our marketing materials available and display boards that indicate where each gallery will be located. In addition, we have a rendering of how the site will look once the project has been completed. While you are there, say "hello" to our docents. They are very knowledgeable about our exhibits and the history of the area. A reminder: The museum is free with plenty of parking.

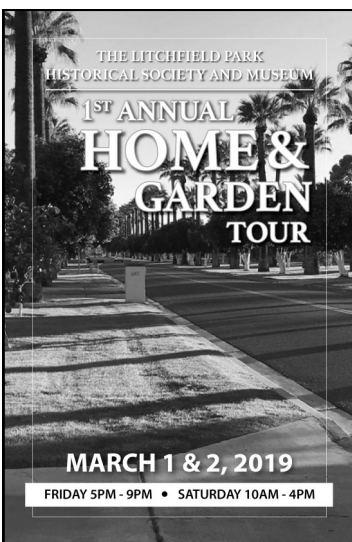
We look forward to seeing you. Thank you for your continued support.

**Nancy Schafer
President, LPHS and MUSEUM**



Event Coordinators: Judy Fulton and Meredith Stucky

Our First Annual Litchfield Park Historical Society Home and Garden Tour was held on March 1st and 2nd. Friday evening our guests enjoyed a private tour of six homes and then a lovely party at the Stucky Residence where they enjoyed lavish hors d'oeuvres prepared by our local culinary artist JoAnn Goodrich and fine wine donated by Ron and Heather Rayner.



The following day over 660 people came to see the six homes plus the one bonus home; beautiful quilts in each of the backyards provided by 'Quilters Anonymous' plus classic cars parked along Old Litchfield Road.



Volunteers from the MHS Student Council

This event would not have been possible without our fantastic group of over 75 volunteers. They were amazing!!! Each person attending the event received a booklet describing each home and we would like to thank our advertisers for making that publication possible. If you would like to have one of these booklets, we have them available at the Museum at no cost.

Plans are underway for our Second Annual Home and Garden Tour. Watch for future communication about this upcoming event.



**Litchfield Park
Historical Society**

WATER FEST

A FUN, EDUCATIONAL, AND
INTERACTIVE EVENT FOR
ALL AGES

SATURDAY, APRIL 13, 2019
10 AM - 4 PM

**LITCHFIELD PARK HISTORICAL
SOCIETY AND MUSEUM**
13912 W CAMELBACK RD
LITCHFIELD PARK, AZ
623.535.4414
LPHSMUSEUM.ORG

- Hands-On Activities
- Demonstrations
- Displays
- Food Truck

FREE ADMISSION

In partnership with  Sponsored in part by a grant from 



The Litchfield Park Historical Society Water Fest will be on Saturday, April 13th at the Litchfield Park Historical Society Museum from 10 a.m. to 4 p.m. In partnership with Arizona Project WET and partially funded by SRP, this free, informative and educational event will have hands-on activities, demonstrations, and displays with the goal of increasing awareness of water resources, history, and management.

Among the exhibits will be a demonstration of groundwater movement and irrigation syphoning. Participants can also see how snowmelt flows into watersheds on a 3D model and simulate the experience of drawing water from a well and washing clothes by hand as early area pioneers would have done.

While many of the fun and interactive exhibits will be engaging for kids, they will also appeal to adults!

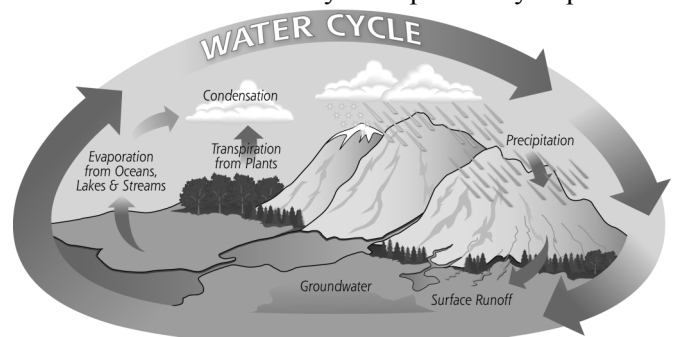
A food truck will be on site, and the museum will be open for visitors to view its most recent exhibit, *Water: the Evolution of a Resource*. This display focuses on water in Arizona and the Southwest Valley from prehistory to present.

Water Fest Event!

Saturday, April 13, 2019

10:00 a.m. – 4:00 p.m.

Litchfield Park Historical Society & Museum
13912 W. Camelback Rd, Litchfield Park



of that history and the need to preserve it, pledged a **million-dollar challenge grant** to the LPHS. In addition, the Blackfords gave \$50,000 to the LPHS to begin the planning process. Pamela Denny Blackford has not only exhibited the vision of her grandfather Paul Litchfield, but also the generosity of her parents Edith and Wally Denny, who were noted philanthropists to various organizations located in the Valley of the Sun.

We believe that the Heritage Center and surrounding property will become a **significant tourist destination**.

This is based on our records indicating that many of the visitors to the museum over the last seven years have not been from the immediate area, but from other states and even other countries. The keen interest in the history of

the Southwest Valley has been due to the significance of the events and stories related to the happenings at the Southwest Cotton Co., Goodyear Farms, Goodyear Aircraft-Arizona, The Wigwam, Goodyear Aerospace-Arizona, St. Thomas Aquinas Mission, the Camps of Litchfield Park, and the many, many early pioneers to the area – farmers, ranchers, merchants, and educators. Individuals from the Southwest Valley who had an impact beyond our area such as Lattie Coor (former ASU President and CEO) and Charles Barrow (founder of the Barrow Neurological Institute) are numerous. **Those stories, along with the history of the various Southwest Valley communities – Tolleson, Cashion, Avondale, Goodyear, Liberty, Waddell, and Litchfield Park – will define the thematic content of the exhibits in the P.W. Litchfield Heritage Center.** They will be woven together through displays showcasing the first six decades of the 20th century.



Our first task was to develop a plan and a budget. The Board of the LPHS hired **Orcutt/ Winslow** (a leading architectural firm in Phoenix) to develop a conceptual design for the building. A few months later, **Waltz Construction** was contracted to assist in developing a pre-construction budget, and work on a structural design to resolve issues related to repurposing the indoor pool, elevator, and additional space for the heritage center. This in-depth planning was required to meet the needs of the museum and provide a workable project budget in order to pass through the City of

Litchfield Park’s approval process. The City of Litchfield Park, through an agreement with the LPHS and as owners of the site and the building, has required this as we move forward through each phase of

the project. At this time, the LPHS is pleased to announce that we have completed Phase I (the design phase), and will be moving forward into Phase II (the planning phase).

Our second task is to raise the money. The total project will cost 3.5 million for the conversion of the structure from a private residence into a public building meeting ADA requirements, an expansion of the garage area into a community events space, a lower floor to house our artifacts, archive, and research library, and an entrance roadway and parking lot for visitors to the site. We are now at the stage in our Capital Campaign where we are meeting with individuals and businesses who we believe may have an interest in a **naming opportunity**. Many of them have deep roots in the Southwest Valley. They may choose to have their family or business name adorn a gallery, terrace, assembly room, the archive, or a number of other areas that they may find appealing.

Continued from page 6

Because the building will be a *legacy building*, one that will stand in perpetuity down through time, the naming opportunities are a **'once-in-a-lifetime' opportunity for individuals and businesses** who wish to be a part of preserving the extraordinary heritage of the Southwest Valley.

Our third task will be the construction phase. Once we have raised 90% of the money and the final plans have been approved, **we will begin construction.** Our current timeline has that activity beginning in the fall of 2020. Upon the completion of the construction, we will move our collections into the new building, set up professional museum-quality exhibits, and **conclude with a grand opening of the facility in the fall of 2021.**

Donations can be made to the LPHS for this project now. You may pick up a packet of materials describing the project and available naming opportunities at our museum during regular hours, or request a packet be sent to you. Your donations will be placed in the **Litchfield Heritage Center (LHC) Building Fund** which has already been established and is accepting donations. This fund is and will continue to be held in a separate account from the LPHS Operational Funds. The name of each donor (no matter the size of the contribution) will be listed on a **Donor Wall** in the new facility. They will be the **Founding Donors** to this extraordinary facility and their names will remain there in perpetuity.

The property and buildings are one of the few historic sites still in existence within Maricopa County. They hold a rich history, have lush grounds, and a peaceful feel in a day and age when a frenetic nature has become the operational norm of our society. In spite of being a well-known industrial figure on the world stage, Paul Litchfield was a reflective and philosophical man. Every day that he was staying at his beloved **Rancho La Loma** included a time in the early evening when he and his family would walk to **Sunset Terrace** to think and reflect, and to observe nature as it moved into the nighttime hours. In addition, he hosted gatherings during the 1950s at the top of the hill intended to bring diverse groups of people together, encouraging them to focus on the things that connected them more than the differences that might separate them. This bringing together of different people with different ideas to learn from the past and reflect on the future will be one of the goals of the programs offered in the Heritage Center – and our way to honor the heritage of Paul Weeks Litchfield.

Help us make this dream come true!

Become a part of preserving the amazing heritage of the Southwest Valley.

Sponsors

\$500 Level



La Loma Village
Sun Health

14154 Denny Boulevard
Litchfield Park, AZ 85340



S&S Tire & Auto Service Center
800 N. Dysart, Goodyear, AZ 85338



WIGWAM
ARIZONA

300 E. Wigwam Blvd., Litchfield Park, AZ
www.wigwamresort.com

\$250 Level

Mary Cavanaugh-Marsh,
Financial Adviser, EDWARD JONES

Estrella Rotary Club

Mickey Ollson, Wildlife World Zoo
and Aquarium

\$100 Level

Paul J. Faith, Esq., Faith, Ledyard & Faith, P.L.C.

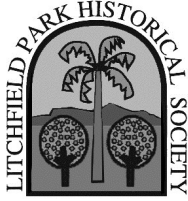
Victor Fierros, Jewelry by Victor

Rick Hughes, Haircutters in the Park

Peter Mahoney, Park Café, Old Pueblo Café,
and Papa Paul's

John Manobianco, State Farm Insurance

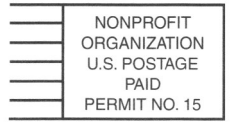
Margie Martinez, La Loma Mexican Grille



PO Box 1936
Litchfield Park, Arizona 85340

Location Address: 13912 W Camelback Rd.

Email: office@LPHSMuseum.org
www.LPHSMuseum.org



Do you have empty aluminum cans?

The LPHS will recycle them for you. Leave them at the garage door of 610 N. Old Litchfield Road, Litchfield Park. The money will help the LPHS pay its utility bills.

***Aluminum only. No tin cans please.**



Join Us. It is through your dues and donations that we are able to continue our efforts to preserve the history of Litchfield Park. *Become a member today.*

LPHS 2019 Membership/Special Donation Form

January 1 – December 31, 2019 membership year

Name _____ Spouse's Name _____

Mailing Address _____

City _____ State _____ Zip _____

Phone _____ Email _____

Annual Membership Dues Single Adult \$20 Family \$30 Business/Professional \$60
 Contributor \$125 Lifetime \$600

I would like to make an additional Special Donation of: \$25 \$50 \$100 Other _____

Thank you! Please make your check payable to: Litchfield Park Historical Society
PO Box 1936, Litchfield Park, AZ 85340

Would you be interested in volunteering for our organization? Yes

The Litchfield Park Historical Society is an official IRS 501 (c)(3) non-profit corporation, and membership dues and other donations are tax deductible for persons who itemize.